

Dual Tunnel Diverter Valve

Plug Type Diverter Valve (DTDV)

Proven Design

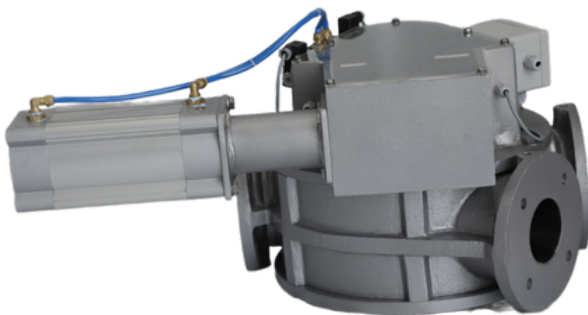
Compact and Light weight Construction

Applications

- Product diversion for lean (dilute) phase conveying - pressure or vacuum mode
- Product diversion for dense phase conveying pressure or vacuum mode

Advantages

- Valve position is mechanically visible from outside
- Easy seal replacement
- LH and RH configuration valve available depending on layout



Solutions For :

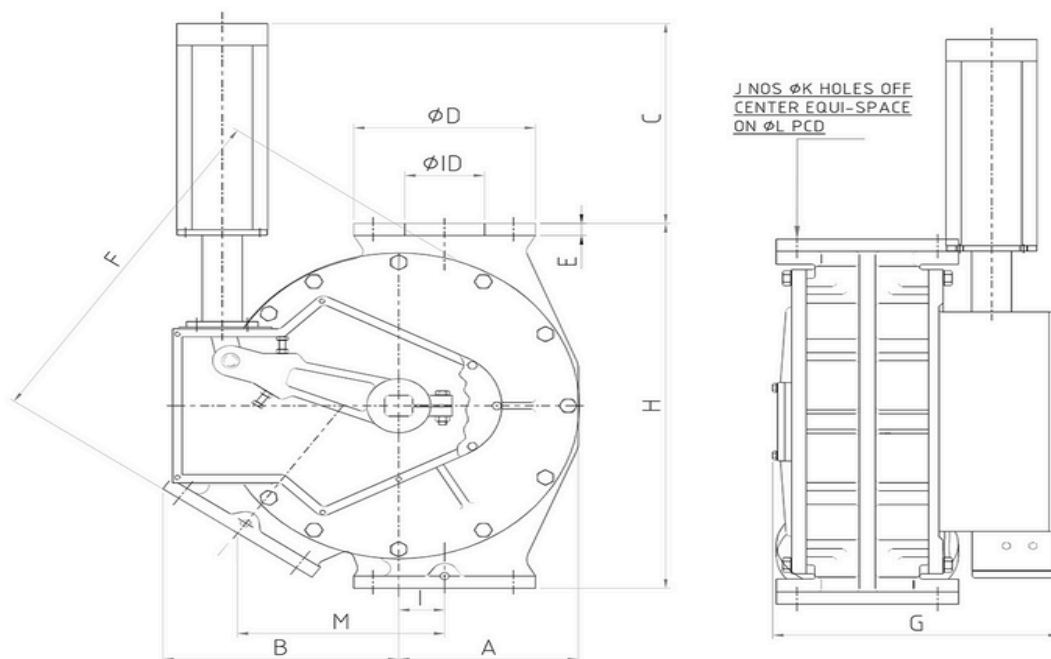
- Food & Beverages
- FMCG
- Pharmaceutical
- Petrochemicals
- Chemicals & Specialty Chemical
- Foundries
- Ceramics
- Paints & Pigments and many more

Design :

The Dual Tunnel Diverter valve also known as Plug Type Diverter Valve is designed to divert / combine from one / two sources to two / one destinations in dilute or dense phase pneumatic transport of solids in powder or granular form

Precision machining, perfect sealing and obstruction free tunnel design ensures smooth passage of products

Drawing & Dimension Table :



Size	A	B	C	D	ID	E	F	G	H	I	J	K	L	M
50	120	160	160	115	51	16	260	175	270	30	4	12	100	130
65	165	240	240	185	71	16	343	330	430	43	4	18	145	205
80	200	260	260	200	83	18	400	350	480	50	4	18	160	230
100	225	300	275	230	102	18	453	380	540	60	8	18	180	26
125	275	360	290	250	127	20	525	400	640	75	8	18	210	335
150	340	430	390	285	152	20	690	370	750	102	8	22	240	430

Technical Data :

- Cast aluminum construction with all product contact parts in SS 304 / SS 316
- Pressure range: Upto 6 bar(g)
- Temperature range: -20 upto 100 deg C
- Fully pre-wired with integrated terminal box

Optional Accessories :

- Option for inflatable seal for very fine powders having $d(90) < 30$ microns
- ATEX compliant versions available on request
- Wear resistant pipes optionally available

Other Products :



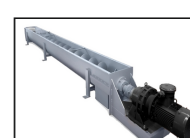
GRAVITY DIVERTER VALVE



SINGLE TUNNEL DIVERTER VALVE



ROTARY AIRLOCK VALVE



SCREW CONVEYORS



PNEUMATIC CONVEYING SYSTEMS