

Storage Silo

- **Requires Less Ground Space. Being vertical and very tall structures as compared to other grain storage options**
- **Convenient Loading & Unloading**
- **Products are stored in optimal conditions**
- **Reliable Longevity**



- Solutions For :**
- Food & Beverages
 - FMCG
 - Pharmaceutical
 - Petrochemicals
 - Chemicals & Specialty Chemical
 - Foundries
 - Ceramics
 - Paints & Pigments and many more

Applications

- SAT Silos are designed to store grains, seeds, legumes, pellets, sugar, flour and other products that require special storage conditions
- MS, SS 304 / SS 316 and Aluminum Alloy construction possible

Advantages

- Rust-proof and maintenance-free silo and accessories
- Non corrosive and weather-resistant standard silos
- Smooth surface therefore problem free product flow

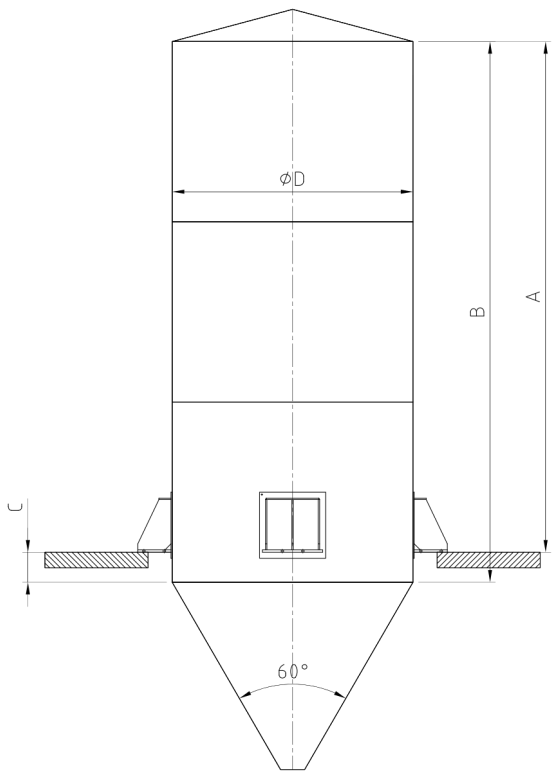


Design :

A storage silo is a specialized structure or container used for the storage of bulk materials such as grains, dal, food products, and various other substances. These silos come in various shapes and sizes and are designed to meet the specific storage requirements of the materials they are intended to hold

Cones with slopes of 45° and 60° may be supplied for proper silo unloading and to guarantee cleaning afterwards. Our cones are meticulously designed to prevent any material may accumulate and, thus, contaminate the product during later loading. we offer a load cell weighing system on the structure as well as level sensors to measure the product level

Capacity & Specification Table :



Type Ø D	Gross Capacity in m ³	A	B	C
2400/1/23	23	5000	4500	500
2400/1/29	29	6250	5750	500
2400/1/34	34	7500	7000	500
2400/1/46	46	10000	9500	500
2400/1/57	57	12500	12000	500
2400/1/68	68	15000	14500	500
3000/1/38	38	5000	4500	500
3000/1/55	55	7500	7000	500
3000/1/64	64	8750	8250	500
3000/1/72	72	10000	9500	500
3000/1/82	82	11250	10750	500
3000/1/90	90	12500	12000	500
3000/1/100	100	13750	13250	500
3000/1/125	125	17500	17000	500
3000/1/100	100	10000	9500	500
3000/1/125	125	17500	17000	500
3500/1/100	100	10000	9500	500
3500/1/124	124	12500	12000	500
3500/1/148	148	15000	14500	500
3500/1/172	172	17500	17000	500
3500/1/196	196	20000	19500	500
3500/1/220	220	22500	22000	500
3500/1/244	244	25000	24500	500
4200/1/148	148	10000	9500	500
4200/1/182	182	12500	12000	500
4200/1/217	217	15000	14500	500
4200/1/252	252	17500	17000	500
4200/1/286	286	20000	19500	500
4200/1/321	321	22500	22000	500
4200/1/355	355	25000	24500	500

Technical Data :

- SS 304 / SS 316 Construction
- MS Construction
- Aluminum Alloy construction cared for grain & pulses

Optional Accessories :

- Rotary bin sweep
- Bin activator
- Aeration vent
- Exhaust fan
- Temperature and moisture monitoring

Other Products :

